

# CARLYLE CROSSING

# Visit Us At

CarlyleCrossing.com



Located just off Altamesa Boulevard in Fort Worth, Texas, just south of Hwy 377, close to parks, schools, dining, shopping & entertainment, Carlyle Crossing is the ideal community to call home!

With mature landscaping, crystal clear swimming pool, controlled access, and more, it's easy to see why Carlyle Crossing is perfect for your family!

Our spacious apartment homes offer a great value with the amenities and features you deserve!

Come check out Carlyle Crossing today!

## INTERIORS

Beautiful Swimming Pool

Convenient to Shopping, Dining & Entertainment

Controlled Access

Spacious Floorplans

Clothes Care Center

## COMMUNITY AMENITIES

Large 1 & 2 Bedroom Apartment Homes

Newly Updated

Large Walk-in Closets

Fireplaces\*

Stackable Washer/Dryer Connections

Choice Amenities

Private Patios & Balconies

Pets Welcome\*\*

## FLOOR PLAN TYPES

1 Bed / 1 Bath 770 Sq. Ft.\*

2 Bed / 2 Bath 1,100 Sq. Ft.\*

2 Bed / 1.5 Bath 1,075 Sq. Ft.\*



\*Available in select homes.

\*\*Restrictions may apply.

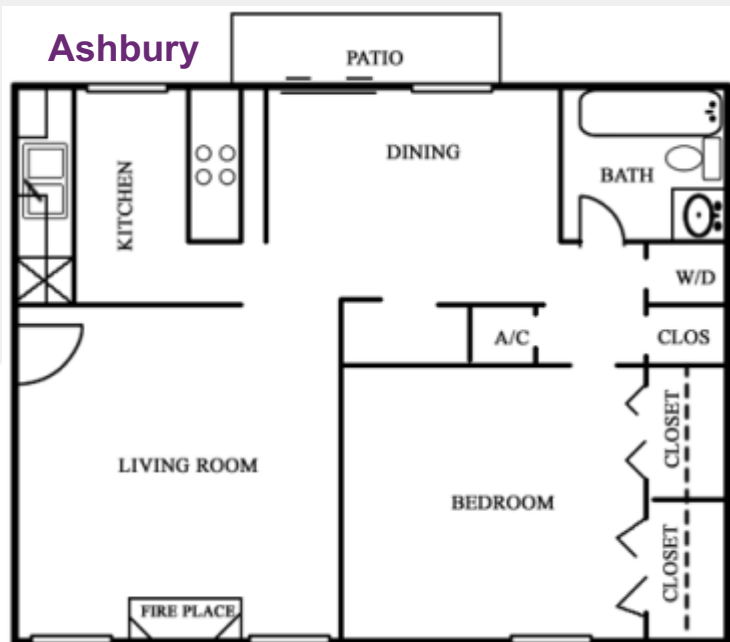
6300 Vega Drive, Fort Worth, TX 76133

(817) 423-2700



## FLOOR PLAN TYPES

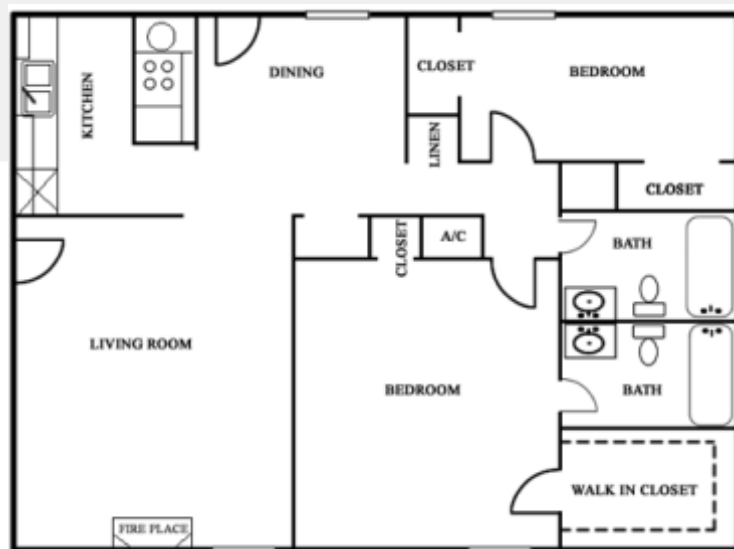
### Ashbury



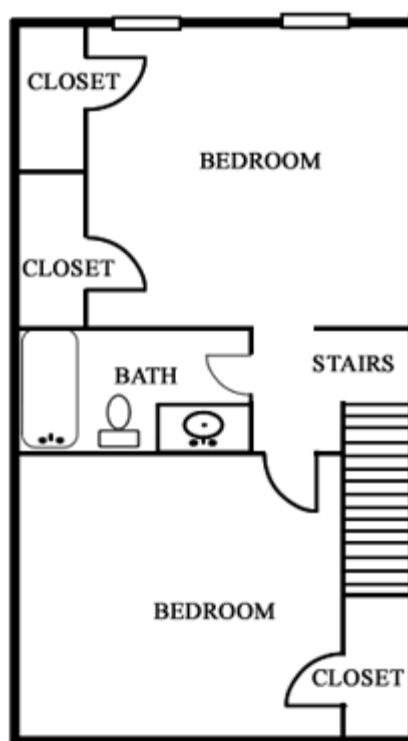
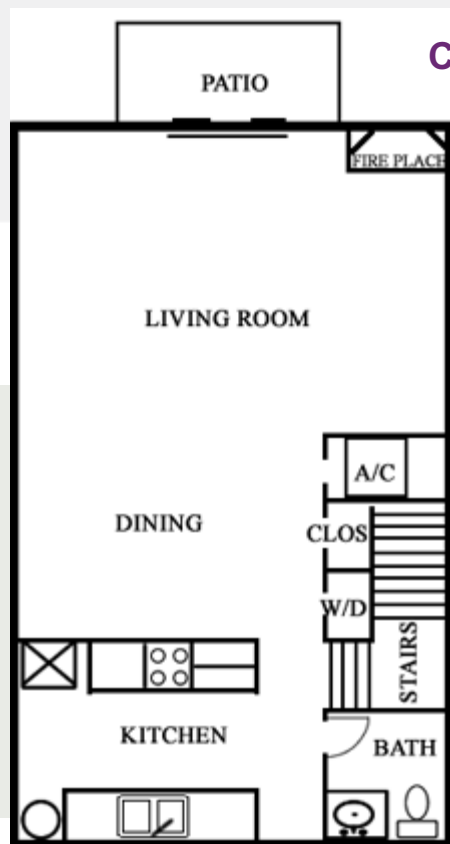
1 Bed / 1 Bath 770 Sq. Ft.\*

### Briarwood

2 Bed / 2 Bath 1,100 Sq. Ft.\*



### Cypress



2 Bed / 1.5 Bath 1,075 Sq. Ft.\*